

Cayman[®]

Minimally Invasive Plate System

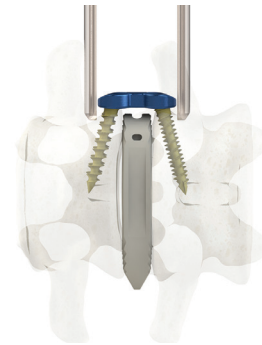


The Cayman Minimally Invasive (MI) Plate System is specifically designed for insertion through the Ravine Lateral Access System's true muscle-splitting Retractor. The single-level, stackable design allows for one-level and multi-level constructs. The Cayman MI plate has a low-profile design and the screws lock to the plate upon insertion, utilizing the revolutionary SMARTLock technology.

Cayman Minimally Invasive Plate System

Plate design

- Designed for insertion through the Ravine Lateral Access System
- Low-profile design
- 4.5 mm maximum profile



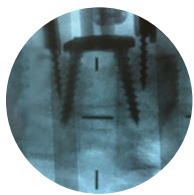
Cayman MI plate pictured with Aleutian Lateral Interbody and Ravine Lateral Retractor



- Four-screw fixation
- Plate positioning based off Aleutian and Cascadia Lateral Interbody System implant placement
- Plates matched to Aleutian and Cascadia Lateral implant heights: 8, 10, 12, 14, 16, and 18 mm
- Screw holes biased 15° normal to the plate
- Assortment of awls, drill guides, and drills available

Streamlined technique

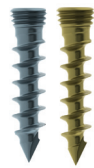
- No repositioning of the Ravine Retractor needed
- Ø5.0 and 5.5 mm self-starting screws with 24 - 60 mm lengths, allowing for unicortical and bicortical fixation in 4 mm increments*



A/P fluoroscopy after Cayman MI placement



Cayman MI positioned off Aleutian Lateral Interbody

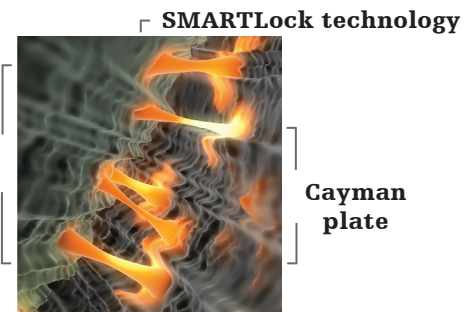


Ø5.0 and 5.5 mm self-starting screws

SMARTLock technology

- Difference in material hardness promotes formation of an autogenic lock between the screw and the plate
- No additional locking mechanism
- Allows for repeated screw adjustment up to three times without compromising the locking feature

Cayman screw



*Ø5.0 and 5.5 mm bicortical screws available by request only.

Spine division

A surgeon must always rely on his or her own professional clinical judgment when deciding whether to use a particular product when treating a particular patient. Stryker does not dispense medical advice and recommends that surgeons be trained in the use of any particular product before using it in surgery.

The information presented is intended to demonstrate the breadth of Stryker product offerings. A surgeon must always refer to the package insert, product label and/or instructions for use before using any Stryker product. The products depicted are CE marked according to the Medical Device Directive 93/42/EEC. Products may not be available in all markets because product availability is subject to the regulatory and/or medical practices in individual markets. Please contact your Stryker representative if you have questions about the availability of Stryker products in your area.

Stryker Corporation or its divisions or other corporate affiliated entities own, use or have applied for the following trademarks or service marks: Aleutian, Cascadia, Cayman, K2M, Ravine, SMARTLock, Stryker. All other trademarks are trademarks of their respective owners or holders.

CAYMI-SS-1_23129
Copyright © 2020 Stryker



K2M, Inc.
600 Hope Parkway SE
Leesburg, VA 20175
t: 571 919 2000

www.stryker.com