

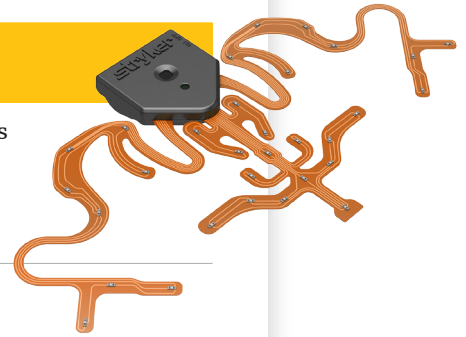
CranialMap® 3.0

highlights summary

CranialMask

The only navigation tracker on the market designed for sterile, soft tissue placement

Sterile packaged	<ul style="list-style-type: none"> • Enables pin-less workflow, less trauma and incisions • Full range head mobility • Ability to check for symmetry • Better access to anatomy for bilateral procedures • One less workflow step
Single use	<ul style="list-style-type: none"> • No capital equipment to maintain • No additional batteries • One item number • Fewer items on the case cart
Universal fit	<ul style="list-style-type: none"> • Lightweight, no skin shift • Smaller and more adaptable anatomical footprint
Shelf life	<ul style="list-style-type: none"> • 4x increase from prior mask • Extended reliability of use
Enhanced LED visibility range	<ul style="list-style-type: none"> • Increased camera placement flexibility • Increased mask visibility during registration and tracking • Effortless to have 5 LEDs visible for mask transfer
Redundant IR communication built in	<ul style="list-style-type: none"> • Enhanced mask communication reliability



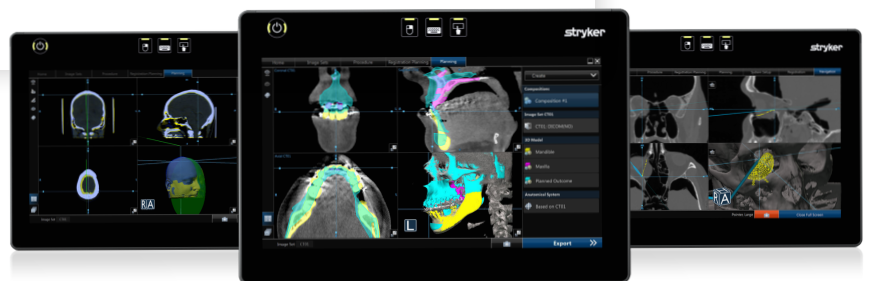
CranialMap 3.0 software

New feature	Benefit
3D model enablement	<ul style="list-style-type: none"> • Custom and generic implant placement planning, modeling and verification
Virtual planes	<ul style="list-style-type: none"> • Visualized custom virtual planes within patient anatomy • Allow for precise localization of margins • Create custom angle measurements • Create a mirror based on a custom plane
Anatomical mirroring	<ul style="list-style-type: none"> • Enables you to compare unaffected and affected anatomy with automatic symmetrical visualization as a pre and intraoperative guide • Automatic mid-sagittal or customized capability

CranialMap 3.0 planning software

For maximum mobility in pre-operative planning

Enables pre-operative analysis and planning prior to entering the operative suite



Navigation

The information presented in this brochure is intended to demonstrate a Stryker product. Always refer to the package insert, product label and/or user instructions before using any Stryker product. Products may not be available in all markets. Product availability is subject to the regulatory or medical practices that govern individual markets. Please contact your Stryker representative if you have questions about the availability of Stryker products in your area. Stryker Corporation or its divisions or other corporate affiliated entities own, use or have applied for the following trademarks or service marks: CranialMap and Stryker. All other trademarks are trademarks of their respective owners or holders.

Literature Number: 9100-004-590 Rev None

Copyright © 2017 Stryker
Printed in USA

Stryker Navigation
4100 East Milham Avenue
Kalamazoo, MI 49001 USA
t: 269 323 7700, f: 800 999 3811
toll free: 800 253 3210

Stryker Leibinger GmbH & Co. KG
Bötzingen Straße 41
D-79111 Freiburg, Germany
t: + 49 761 4512 0, f: +49 761 4512 120
navigation.stryker.com