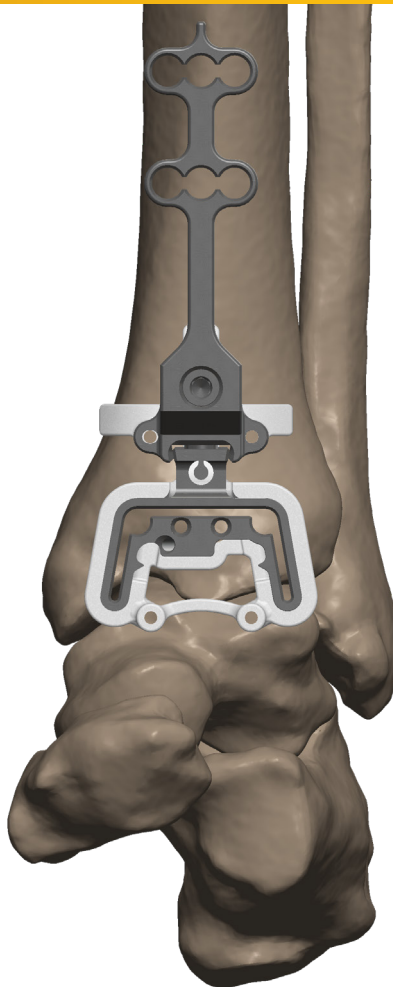


Prophecy[®] Infinity[®]

Resect-Through Guides



Building upon the experience of over 9 years and 35,000 Prophecy cases, accuracy continues to drive outcomes. The Resect-Through Guide system represents the latest refinement of the technique, allowing the surgeon to reproduce a patient's surgical plan with a further reduction of steps and improved fluoroscopic visualization.

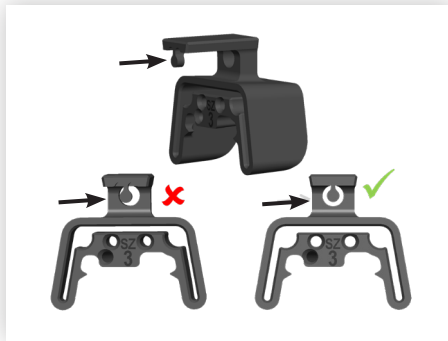
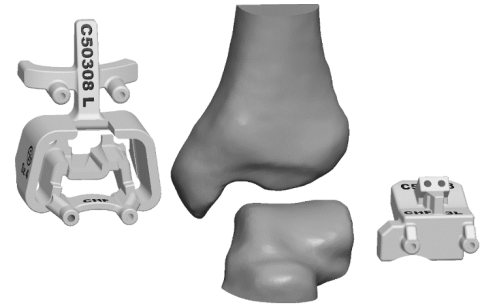
Prophecy® Infinity® Resect-Through Guides



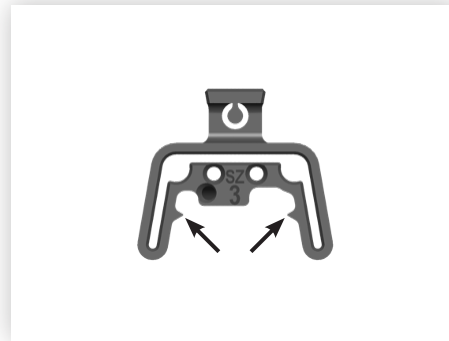
By utilizing the preoperative planning capabilities of the Prophecy system, potentially time-consuming intraoperative steps such as determining alignment, choosing implant size, and reliance on fluoroscopic guidance are all reduced. Prophecy guides are designed to match the patient's anatomy and fit securely into position, setting resection guide locations according to component alignment determined preoperatively. It's time to start optimizing your surgeries by incorporating these guides into your Prophecy plans.

Prophecy Resect-Through Guides provide:

- **Fewer steps** than the Prophecy standard pin through technique
- **OR efficiency** by using one guide for drilling and cutting
- **Metal guides** to maintain cutting stability
- **Optional holes** to couple the alignment for the talus
- **Corner pegs** to protect against notching
- **Improved fluoroscopic visualization:** view coronal alignment, positioning, and implant size all in one shot



Integrated bulls eye fluoro



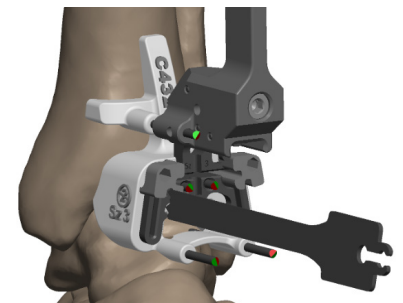
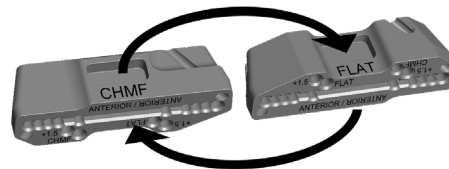
Joint line reference arrows



Press fit assembly of components

New reversible Talus resection guide

- Wider pin spacing for less toggle
- Oblique pin option
- Single guide, multiple cut levels (Chamfer, +1.5mm, Flat Cut)



Complete all 3 tibia resections in one, streamlined step

Foot & Ankle

Visit footankle.stryker.com or email us at footandankle@stryker.com

The information contained in this document is intended for healthcare professionals only. A surgeon must always rely on his or her own professional clinical judgment when deciding whether to use a particular product when treating a particular patient. Stryker does not dispense medical advice and recommends that surgeons be trained in the use of any particular product before using it in surgery.

The information presented is intended to demonstrate the breadth of Stryker's product offerings. A surgeon must always refer to the package insert, product label and/or instructions for use before using any of Stryker's products. Products may not be available in all markets because product availability is subject to the regulatory and/or medical practices in individual markets. Please contact your sales representative if you have questions about the availability of products in your area. Stryker Corporation or its divisions or other corporate affiliated entities own, use or have applied for the following trademarks or service marks: Stryker. All other trademarks are trademarks of their respective owners or holders.

AP-015617A, 11-2021

Copyright © 2021 Stryker