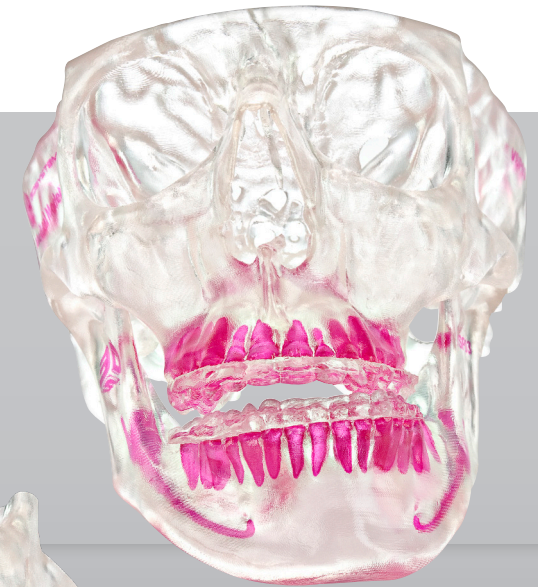
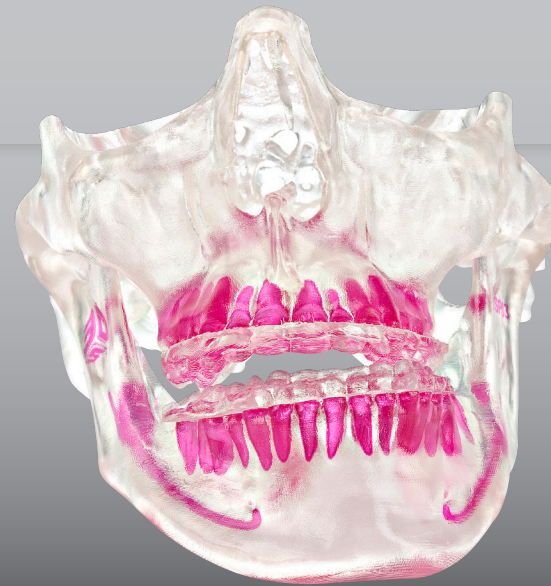
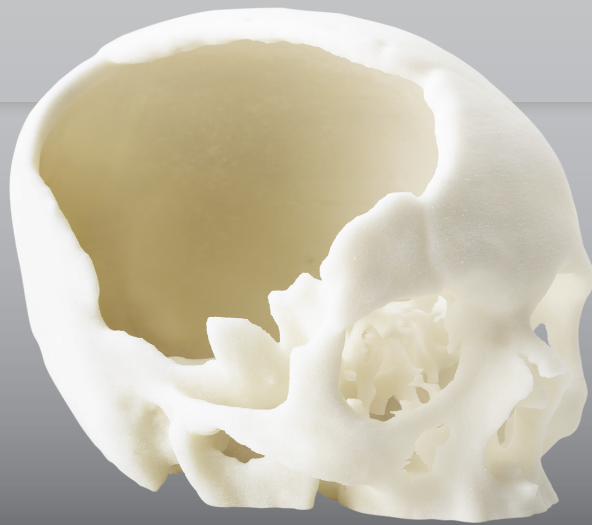


# 3D SYSTEMS

CT-based anatomical  
bone models






## CT-based anatomical bone models

### CT Scanning Guidelines

1. A 2-D axial, or helical CT scan without contrast done in the axial plane should be performed using 1mm x 1mm (or less) cuts to give the most accurate dataset. The patient should be positioned supine with occlusal plane parallel to the gantry. The scan should be performed using a standard algorithm (not bone or detail), using a 25cm field of view (FOV), and archived as uncompressed image data (Do NOT send raw data).
2. The CT scan facility will archive the image data from the scan to an optical disk or CD-ROM for transport to 3D Systems, Inc. (Do not send film). Certain facilities may also be able to FTP (file transfer protocol) this data for Internet transfer. Have the CT facility contact 3D Systems, Inc. to discuss different options for transfer of data. Optical disks will be returned to the scanning facility.
3. 3D Systems, Inc. supports all brands of scanners.

### OsteoView Anatomical Models

	Cat. No.	Qty	Description
	6500000011	1	OsteoView Mandible
	6500000012	1	OsteoView Maxilla
	6500000013	1	OsteoView Mandible & Maxilla
	6500000014	1	OsteoView Full Skull Adult
	6500000015	1	OsteoView Full Skull Pediatric (up to 5 years)

- Opaque physical appearance
- Low Cost

### ClearView Anatomical Models

	Cat. No.	Qty	Description
	6500000006	1	ClearView Mandible
	6500000007	1	ClearView Maxilla
	6500000008	1	ClearView Mandible & Maxilla
	6500000009	1	ClearView Full Skull Adult
	6500000010	1	ClearView Full Skull Pediatric (up to 5 years)

- Sub-millimeter accuracy
- Sterilisable material
- Selective coloration of vital structures

**We offer CT-based anatomical bone models to help with pre-surgical planning for complex cases. Models can be used for distraction osteogenesis, orthognathics, skull based tumors and mandible and cranial reconstructions.**

### CMF

This document is intended solely for the use of healthcare professionals.

A healthcare professional must always rely on his or her own professional clinical judgment when deciding whether to use a particular product when treating a particular patient. Stryker does not dispense medical advice and recommends that healthcare professionals be trained in the use of any particular product before using it in surgery.

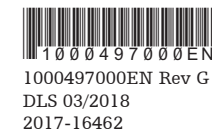
The information presented is intended to demonstrate the breadth of Stryker product offerings. A healthcare professional must always refer to the package insert, product label and/or instructions for use before using any Stryker product.

Products may not be available in all markets because product availability is subject to the regulatory and/or medical practices in individual markets. Please contact your Stryker representative if you have questions about the availability of Stryker products in your area.

Stryker Corporation or its divisions or other corporate affiliated entities own, use or have applied for the following trademarks or service marks: Stryker. All other trademarks are trademarks of their respective owners or holders.

The products depicted are CE marked in accordance with applicable EU Regulations and Directives.

This material is not intended for distribution outside the EU and EFTA.



Copyright © 2018 Stryker  
stryker.com

#### Manufactured by:



3D Systems Healthcare  
5381 South Alkire Circle  
Littleton, Colorado 80127 USA  
t: +1 844.643.1001  
(toll-free US/Canada)  
t: +1 720.643.1001  
f: +1 720.643.1009  
www.3dsystems.com/healthcare  
vsp@3dsystems.com  
MM-558 Rev A

#### Distributed by:

Stryker Leibinger GmbH & Co. KG  
Bötzingter Straße 41  
79111 Freiburg  
Tel: +49 (0) 761 4512-0



# 3D SYSTEMS®

#### Please visit

[www.medicalmodeling.com](http://www.medicalmodeling.com) and click on the upload link on the top right for digital transfer of DICOM images.