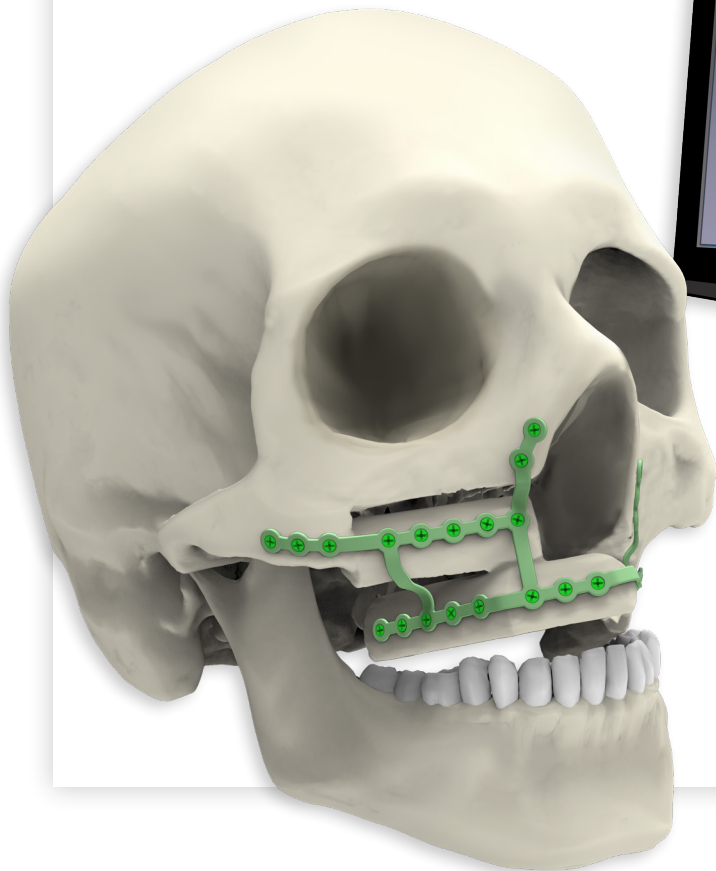


# Facial **iD**<sup>TM</sup>

## Reconstruction



**iD Solutions**<sup>®</sup>

Individually designed. Personalised care.

Disclaimer: This product is a custom made medical device and is therefore exempt from Inclusion on the ARTG.

# We're putting the control in **your hands**



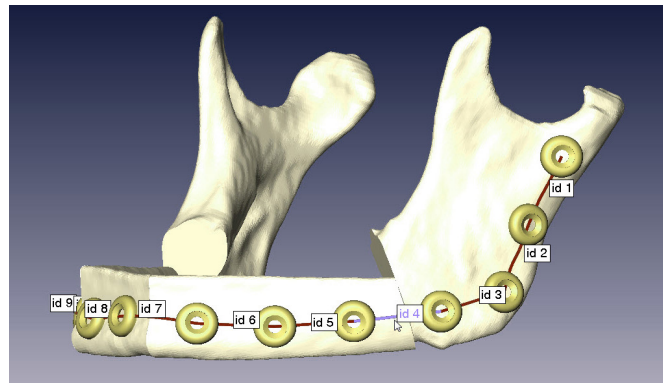
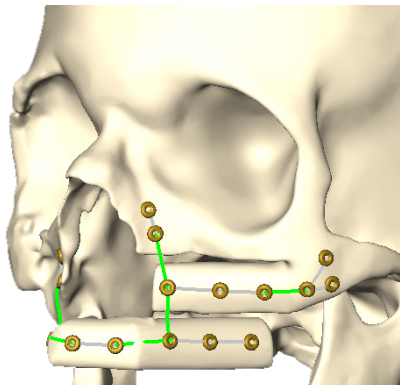
We designed our Facial iD midface and mandible reconstruction plates to meet the individual needs of you and your patients. These customised plates are manufactured to the planned patient outcome, eliminating the time needed for intraoperative adaptation. In collaboration with 3D Systems, Virtual Surgical Planning (VSP) can be used to further enhance your patient outcomes.

## Personalised design session

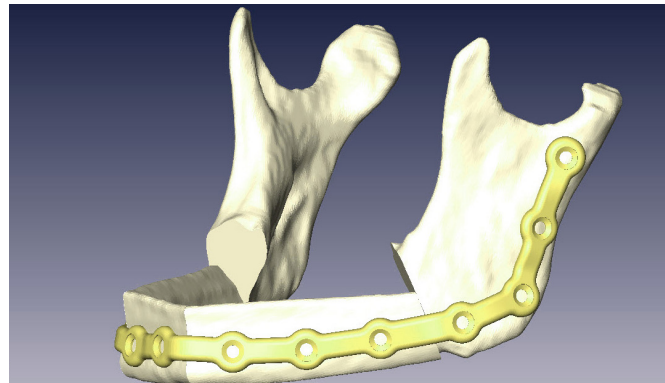
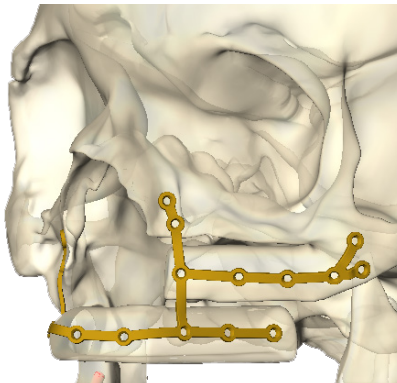
During a design session, you can interface with a design engineer to select specific plate features such as profile height, length and run of the plate, number of screw holes, as well as individual bar strengthening.



### Screw holes are placed according to your preoperative plan

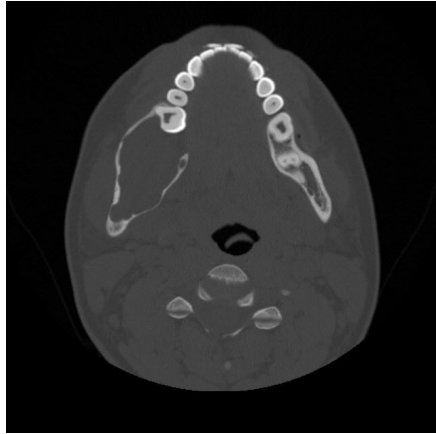


### Visualise final implant on the design session



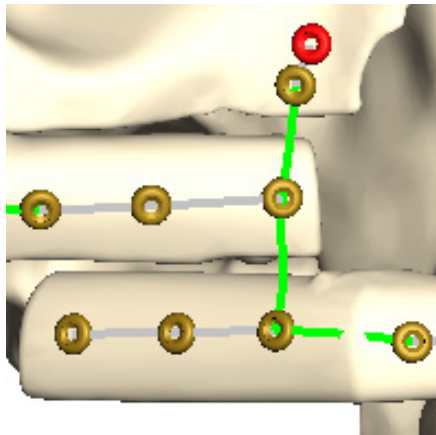
Artistry **redefined.**

# The value of true customisation



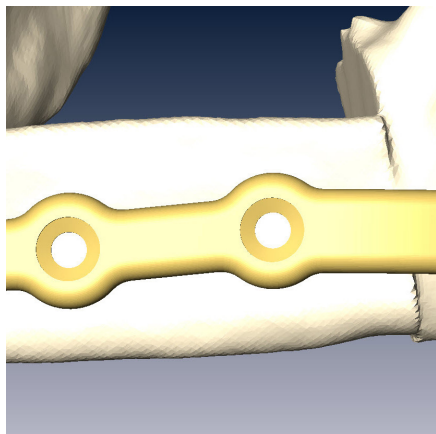
## Patient-specific design derived from patient CT or CBCT data

Our iD Solutions team creates a virtual reconstruction and an individual plate design with your online participation. Plate design is based upon a CT or CBCT scan of your patient.



## Customisable design features

By selecting specific plate design features like profile height, length and run of the plate you can create patient-specific solutions. Specific screw hole positions are defined individually to avoid screw interference with nerves, tooth roots, osteotomies and existing or future implants.



## Customised strength optimisation

Select plate profile heights and increase bar widths over the osteotomy site; potentially improving the fatigue strength by approximately 40% compared to standard universal mandible reconstruction plates.<sup>1</sup>

# Mandible reconstruction

## Titanium

### Primary mandible reconstruction (2.0mm)



78-31020  
full



78-30020  
hemi

### Secondary mandible reconstruction (2.8mm)



78-31028  
full

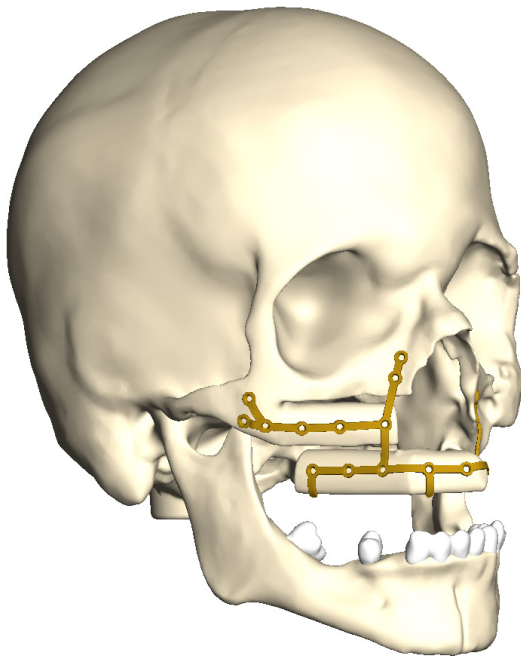


78-30028  
hemi



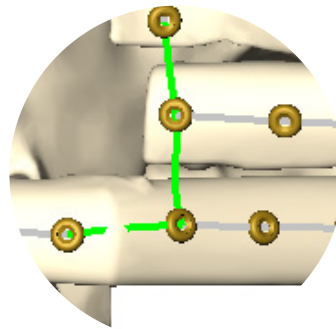
# Midface reconstruction

Titanium, MEDPOR and PEEK

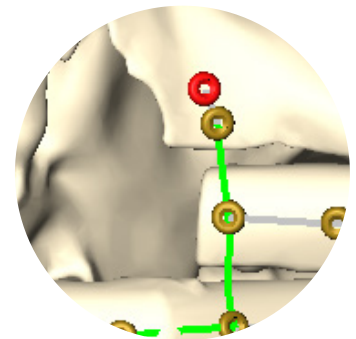


## Enhanced visualisation

Receive real time feedback while precisely planning screw hole location, bar width and plate thickness around critical anatomy.



Critical bars indicated



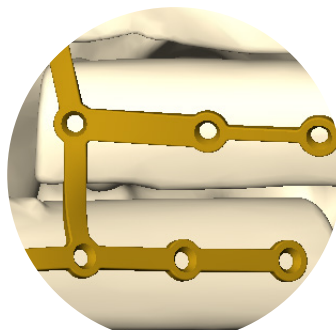
Screw hole placement

## Design flexibility

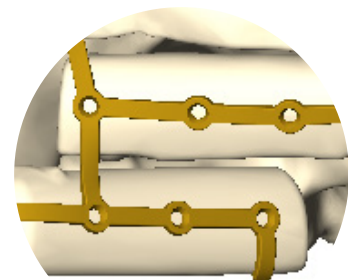
Allows for variation in implant complexity and choice of screw diameter to fit your surgical needs.



Y plate designs



Varied bar thickness



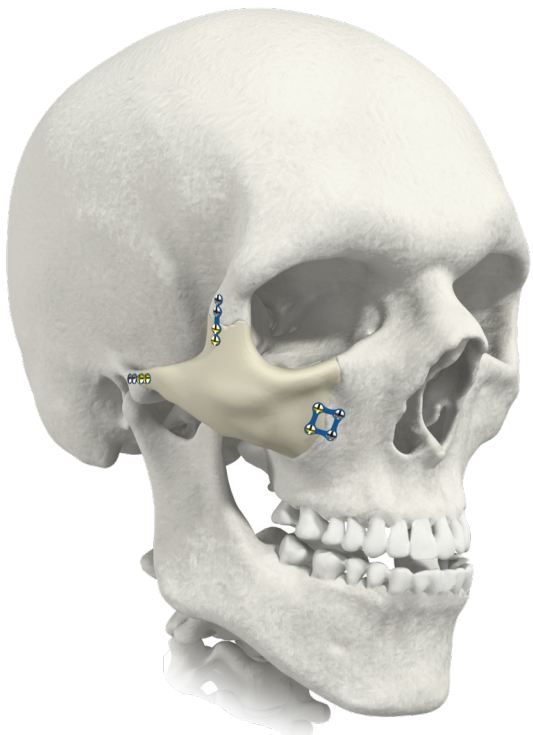
Flange for additional bony reference points

# MEDPOR

High density, porous polyethylene implants planned off of patient specific CT/CBCT scans.

Interconnecting, omni-directional pore structure promotes fibrovascular ingrowth and integration of the patient's tissue.

If desired, material can be easily modified intraoperatively and can be fixated without pre-drilling holes.

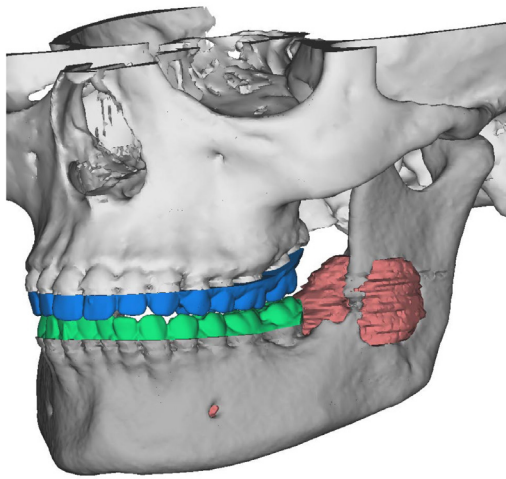


# PEEK

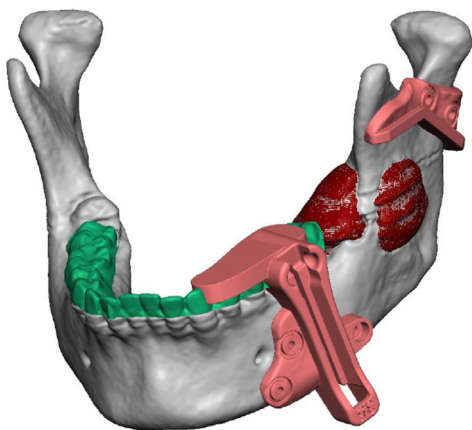
Polyether ether ketone implants are planned off of patient specific CT/CBCT scans allowing for a precise fit and accurate reconstruction.

Material provides strength and the ability to modify intraoperatively if needed.

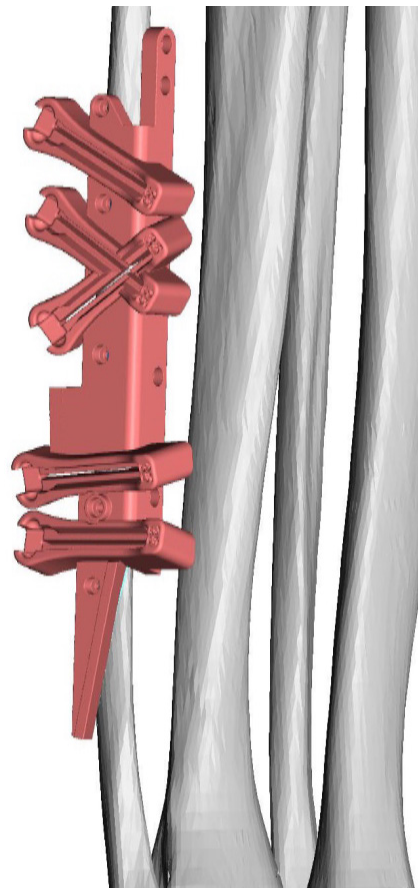
# Virtual Surgical Planning



Pre and postoperative  
patient anatomy

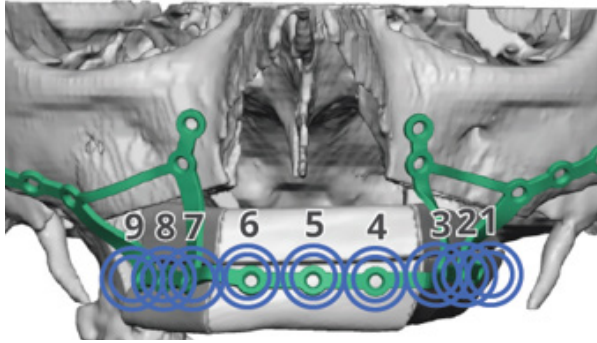


Cutting guides with metal inserts

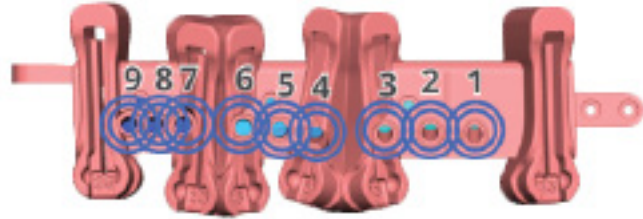


Fibula cutting guides with  
metal inserts

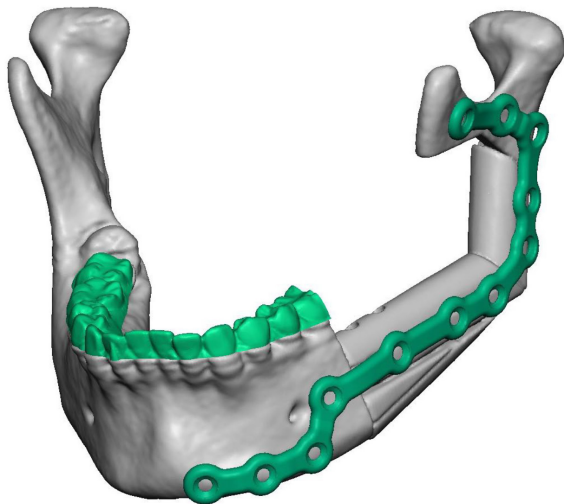




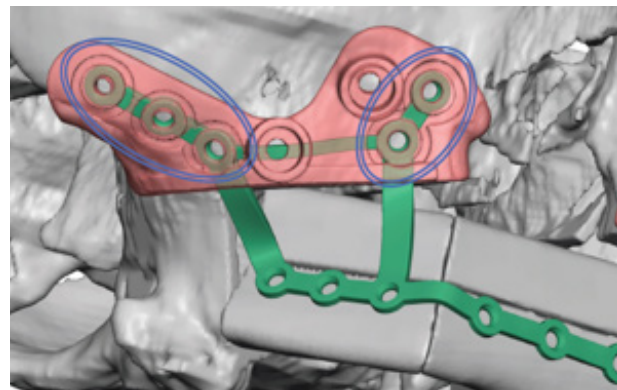
Predictive drill holes link final and original position of fibula segments



Together with 3D Systems  
**we offer VSP®**



Postoperative anatomy with Facial iD reconstruction plate

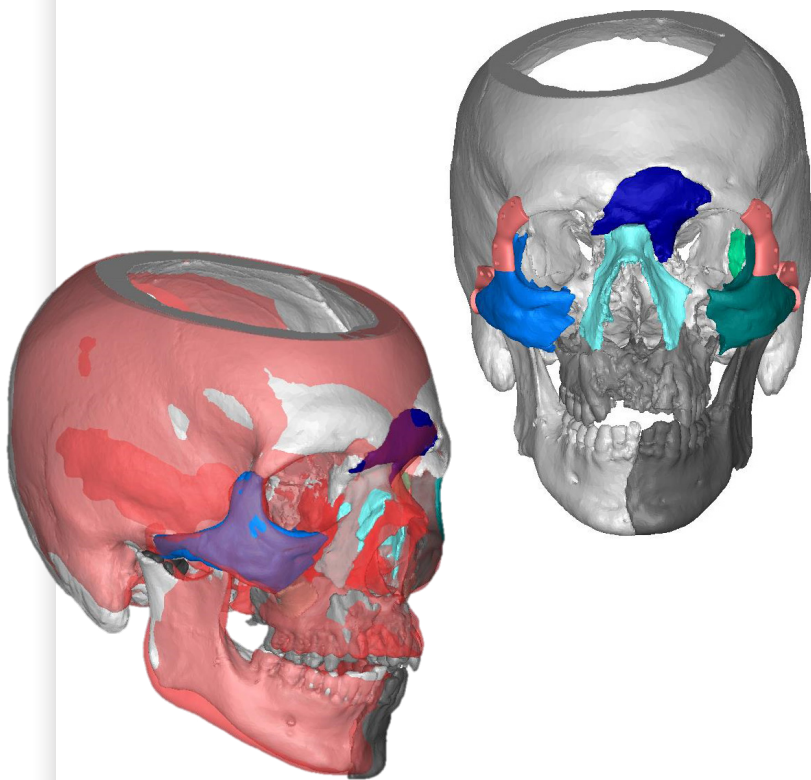


Marking guides with predictive screw holes

Plan with  
**confidence.**

# Midface and mandible

# trauma



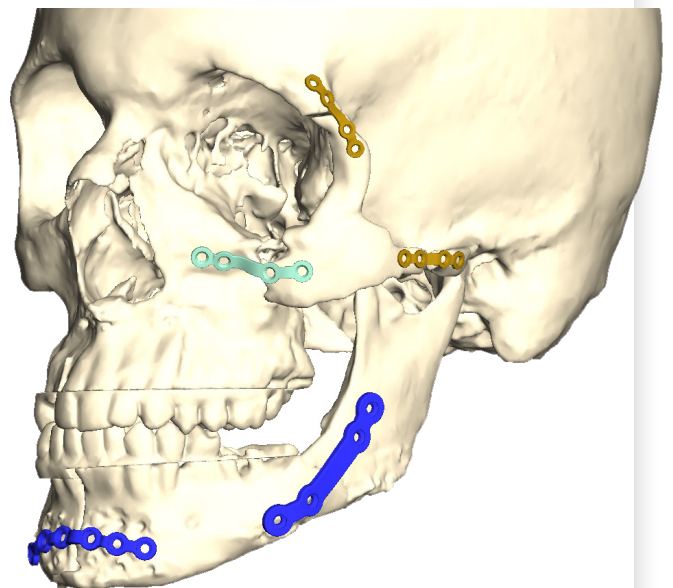
## 3D Printed plates

Design patient specific plates for fracture repair in midface and mandible trauma

## Virtual Surgical Planning

Visualise preoperative and repositioned postoperative anatomy

Utilise positioning guides to ensure accurate reconstruction



# Ordering information

## Midface reconstruction and midface/mandible trauma

Part number	Description
78-91001	1 plate
78-91002	2 plates
78-91003	3 plates
78-91004	4 plates
78-91005	5 plates
78-91006	6 plates
78-91007	7 plates
78-91008	8 plates

## MEDPOR reconstruction

Part number	Description
5444-0-510	Customized midface

## PEEK reconstruction

Part number	Description
78-10100	Customized midface

## Mandible reconstruction

Part number	Description
<b>2.0mm Primary reconstruction</b>	
78-30020	Hemi plate
78-31020	Full plate
78-20020	Kit, hemi plate
78-21020	Kit, full plate
<b>2.8mm Secondary reconstruction</b>	
78-30028	Hemi plate
78-31028	Full plate
78-20028	Kit, hemi plate
78-21028	Kit, full plate

# Craniomaxillofacial

## References

1. Dynamic Testing. Reports available at Stryker Leibinger GmbH & Co. KG.

This document is intended solely for the use of healthcare professionals. A surgeon must always rely on his or her own professional clinical judgment when deciding whether to use a particular product when treating a particular patient. Stryker does not dispense medical advice and recommends that surgeons be trained in the use of any particular product before using it in surgery.

The information presented is intended to demonstrate a Stryker product. A surgeon must always refer to the package insert, product label and/or instructions for use, including the instructions for cleaning and sterilization (if applicable), before using any Stryker product. Products may not be available in all markets because product availability is subject to the regulatory and/or medical practices in individual markets.

Please contact your Stryker representative if you have questions about the availability of Stryker products in your area. Stryker Corporation or its divisions or other corporate affiliated entities own, use or have applied for the following trademarks or service marks: Facial iD, iD Solutions, MEDPOR, Stryker. All other trademarks are trademarks of their respective owners or holders.

VSP is a registered trademark of 3D Systems, Inc.

CMF-BR-195\_Rev.SSP

Copyright © 2019 Stryker

Stryker Australia Pty Ltd  
8 Herbert Street,  
St Leonards NSW 2065  
T: 61 2 9467 1000  
F: 61 2 9467 1010

Stryker New Zealand Limited  
515 Mt Wellington Highway,  
Mt Wellington Auckland  
T: 64 9 573 1890  
F: 64 9 573 1891

[www.strykermed.com](http://www.strykermed.com)