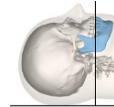


Email: CMFcustomizedimplants@stryker.com

Protocol for medical CT scanners

Patient positioning	
Gantry tilt	0° Gantry Tilt
Head alignment	Align occlusal plane parallel to gantry. Position patient to avoid as much artifact as possible. Keep jaws slightly separated (use a bite block if available).
Scan length / FOV	
Scan length	Encompass the entire mandible
Field of view	Select field of view to include all surrounding anatomy (20.5cm recommended)
Acquisition	
Slice thickness	Maximum = 1.5 mm (1 mm preferred)
Beam collimation	Width and detector configuration necessary to achieve actual slice thickness
Table increment	Constant Table increment, no gaps. Smaller than or equal to slice thickness
Sequential scanners	No overlap and no gap
Single-slice helical scanners	Beam pitch = 1
Multi-slice helical scanners	Beam pitch < 1 (GE: High Quality; Toshiba: Detail)
Pixel type	Square
Algorithm (kernel)	Process images with both standard and bone algorithms
Slice orientation	Axial slice orientation

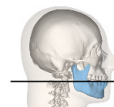
No oblique angle of locator/survey lines



Warning: Do not post process to alter slice orientation or thickness

Protocol for CBCT scanners

Patient positioning	
Laser guides	No oblique angle of laser guide lines
Head alignment	Remain straight in neutral position
Scan FOV	
Field of view	Encompass the entire mandible.
Acquisition	
X-Ray beam parameters	Use optimal parameters for your machine to provide the best scan with acceptable radiation dose levels
Scan time	Longest available
Voxel size	0.2 – 0.4 mm
Slice orientation	Axial slice orientation
Algorithm (kernel)	Process images with both standard and bone algorithms



Warning: Do not post process to alter slice orientation or thickness

Key points

Patient movement	Avoid patient motion. If the scan shows motion artifacts, the scan cannot be used.
Series	CT: Original/Primary/Axial
Series ID	All images of a scan should be stored in one series.
File format	DICOM format. No raw data. Do Not Compress. Do Not Format for Viewer Programs.
Data archiving	Archive only the relevant examination(s) in uncompressed DICOM (CD-R preferred).
Data storage	Recommendation: Save raw data for at least 14 days after scan

Guidance for pediatric scanning

Exposure to ionizing radiation is of particular concern in pediatric patients. Check if existing scans meets the requirements for Stryker implant design. To avoid rescanning of patients, follow the parameters given in the Stryker Scan Protocol and use reduced dose and child-sized protocols where appropriate. Stryker recommends consulting the instructions for use provided by your imaging device manufacturer, and limiting radiation dosage to the amount clinically necessary. Statutory national Diagnostic Reference Levels (DRLs) for pediatric as well as for adult CT examinations must be complied with. Limit the dose by reducing Tube Voltage (kV) and the Tube-Current-Time product (mAs), consider patient size and activate Tube Current Modulation and/or Automatic Exposure Control if applicable and indicated for pediatric patients.

Cranio-maxillofacial

This document is intended solely for the use of healthcare professionals.

A healthcare professional must always rely on his or her own professional clinical judgment when deciding whether to use a particular product when treating a particular patient. Stryker does not dispense medical advice and recommends that healthcare professionals be trained in the use of any particular product before using it in surgery.

The information presented is intended to demonstrate the breadth of Stryker product offerings. A healthcare professional must always refer to the package insert, product label and/or instructions for use before using any Stryker product.

Products may not be available in all markets because product availability is subject to the regulatory and/or medical practices in individual markets. Please contact your Stryker representative if you have questions about the availability of Stryker products in your area.

Stryker Corporation or its divisions or other corporate affiliated entities own, use or have applied for the following trademarks or service marks: Facial iD, Stryker. All other trademarks are trademarks of their respective owners or holders.

The products depicted are CE marked in accordance with applicable EU Regulations and Directives.

This material is not intended for distribution outside the EU and EFTA.

CMF-EM-79EN_Rev.1_15826
SDL 07/2020
2020-26445
Copyright © 2020 Stryker
stryker.com



Stryker Leibinger GmbH & Co. KG
Bötzingen Straße 41
79111 Freiburg
Germany



0197