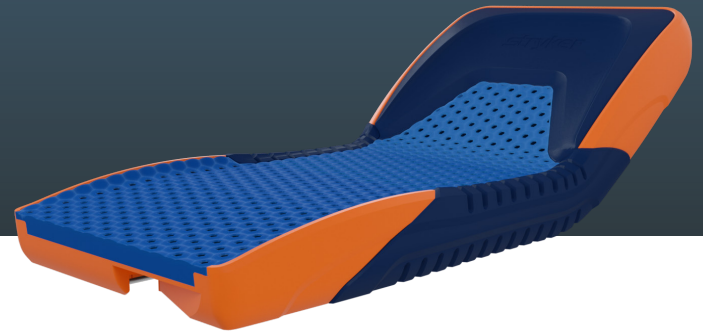


IsoTour[®]

Gel Support Surface



Introducing IsoTour powered premium and non-powered

IsoTour powered premium configuration is intended to assist in the reduction of hospital-acquired pressure ulcers by addressing three key risk factors of skin breakdown: pressure, shear and moisture.

The non-powered standard configuration is designed to assist in the redistribution of pressure specific to the individual needs of patients.

IsoTour is composed primarily of gel structures that help redistribute pressure by buckling and absorbing the patient's weight. The tall hexagonal structure in addition to the gel or Low Air Loss design promotes airflow up through the mattress directly beneath the patient. Additionally, the contour gel is placed in three distinct regions to help relieve pressure on bony prominences, as well as to enhance comfort.

€2.3 billion

Pressure ulcers have a profound economic burden across Europe with estimates between £1.4 and £2.1 billion for the UK and €1 and €2.3 billion in Germany.¹

12.1%

In Belgium 12.1% of inpatients suffer from pressure ulcers in hospital settings. This is 8.9%, 11% and 10.2% in France, Germany and the UK respectively.¹

>£8,500

In the UK, the mean NHS cost of wound care over 12 months ranged from £1400 for category 1 ulcer to >£8500 for the other categories of ulcers.²

Innovative gel



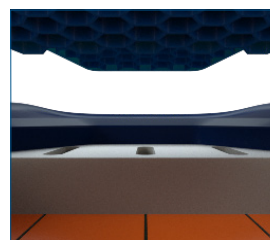
IsoTour Pump



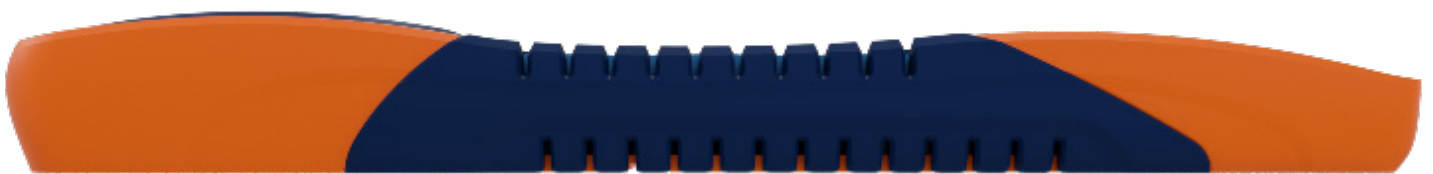
TruTurn turn assist and offload



Low Air Loss convertibility



IsoTour cover



IsoTour[®]

Gel Support Surface



Standard support surface

- Endurance by Dartex cover
- Patented contour gel material designed to redistribute pressure by buckling and absorbing patient's weight
- Contour gel placed in three regions
- Latex free
- Welded seams on top cover
- Handles and D-rings on all four sides/corners

Premium support surface

- Spacer fabric for enhanced air flow
- TruTurn and LAL capable when pump connected
- Anchor straps

Additional features

- IsoTour pump (2874)
- Gel mattress extender pad

Specifications

Model number	2872
Overall length	200 cm (78.75") and 214 cm (84.25")
Overall width	90.2 cm (35.5")
Thickness	24.1 cm (9.5")
Safe working load	227 kg (500 lb)

IsoTour Pump specifications

Model number	2874
Height	43.8 cm (17.25 in)
Width	23.5 cm (9.25 in)
Depth	18.4 cm (7.25 in)
Weight	7.4 kg (16.3 lb)

Expected service life

- 5 years on standard top cover (END406)
- 5 years on bottom cover, standard or premium
- 10 years on mattress core assembly, spacer fabric and fire barrier

References: 1. Deloitte consulting. (2014). Do Healthcare Systems Promote the Prevention of Pressure Ulcers? Belgium. https://www2.deloitte.com/content/dam/Deloitte/be/Documents/life-sciences-health-care/2014%20White%20papers_Pressure%20ulcers_A4-7.pdf 2. Guest, Fuller, Vowden, & Vowden. (2018). Cohort study evaluating pressure ulcer management in clinical practice in the UK following initial presentation in the community: costs and outcomes. *BMJ Open*, Published online 2018 Jul 25. doi: 10.1136/bmjopen-2018-021769. <https://europepmc.org/articles/pmc6067374>

This document is intended solely for the use of healthcare professionals. A healthcare professional must always rely on his or her own professional clinical judgment when deciding whether to use a particular product when treating a particular patient. Stryker does not dispense medical advice and recommends that healthcare professionals be trained in the use of any particular product before using it in surgery. The information presented is intended to demonstrate the breadth of Stryker product offerings. A healthcare professional must always refer to the package insert, product label and/or instructions for use before using any Stryker product. Products may not be available in all markets because product availability is subject to the regulatory and/or medical practices in individual markets. Please contact your Stryker representative if you have questions about the availability of Stryker products in your area. Stryker Corporation or its divisions or other corporate affiliated entities own, use or have applied for the following trademarks or service marks: IsoTour, TruTurn, Contour Gel and Stryker. All other trademarks are trademarks of their respective owners or holders. The products depicted are CE marked IsoTour, class I **CE**, IsoTour with control unit, class IIa **CE** in accordance with applicable EU Regulations and Directives. This material is not intended for distribution outside the EU and EFTA.



Stryker Medical
3800 E. Centre Avenue
Portage, MI 49002 USA

stryker.com