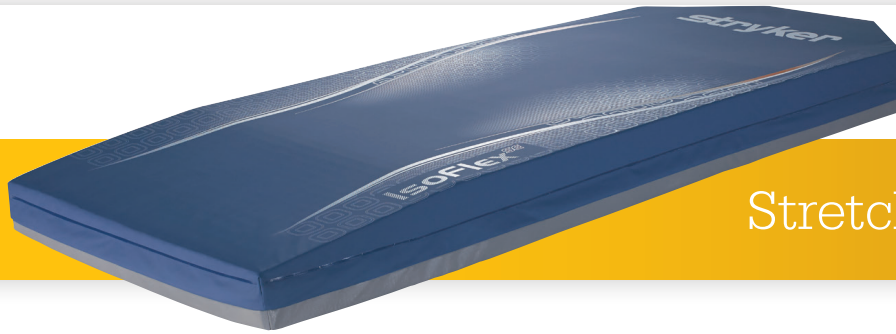


IsoFlex SE



Stretcher Support Surface

IsoFlex SE features are intended to address the key contributors to skin breakdown: **pressure and shear.**

Stryker's IsoFlex SE has features intended to help address the key risk factors of skin breakdown: pressure and shear. In addition, the surface is designed to enhance patient comfort and aid in the treatment and prevention of pressure injuries.

Standard features

- ShearGel Technology
- CoreGel Technology
- Polycarbonate polyurethane cover
- Welded seams
- Sloped heel section
- Three-sided zipper
- Slip-resistant bottom

Warranty

- Internal components: three (3) years
- Fire barrier: one (1) year
- Support surface cover: one (1) year

Specifications

Model number	1806
Overall width	76.2 cm (30")
Overall length	193.0 cm (76")
Overall thickness	14.0 cm (5.5")
Weight capacity	317.5 kg (700 lb.)
Fire retardant inner cover	Yes

CoreGel Technology

Located in the sacral region, CoreGel creates a positioning pocket to help prevent patient migration.¹ Its design helps absorb and disperse patient weight to aid in pressure redistribution.



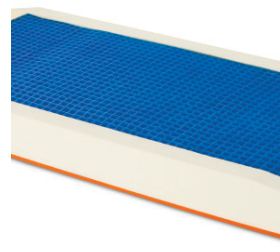
Welded seams

Stryker's covers are sealed with a specific type of RF welding utilising electromagnetic bonding to limit fluid ingress and infiltration.



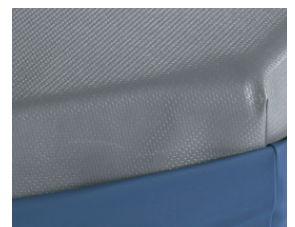
ShearGel Technology

IsoFlex SE incorporates a layer of ShearGel to address shearing at the point of contact between patient skin and the surface. This gel allows for patient immersion.



Slip-resistant bottom

IsoFlex SE's bottom features a slip-resistant material to eliminate Velcro while maintaining affixation to the stretcher during patient movement and transfer.



*Flammability standards: CALTB117; 16CFR1632; CGSB CAN 2-4.2 Method 27.7-M77; BS EN 597-1; BS EN 597-2; CAL TB129; 16CFR1633; BS 6807, Clause 9; BFD IX-11; UNI9175

1. Best when used in combination with a stretcher equipped with Lift Assist Backrest.

A healthcare professional must always rely on his or her own professional clinical judgment when deciding whether to use a particular product when treating a particular patient. Stryker does not dispense medical advice and recommends that healthcare professionals be trained in the use of any particular product before using it. The information presented is intended to demonstrate the breadth of Stryker product offerings. A healthcare professional must always refer to the package insert, product label and/or instructions for use before using any Stryker product. Products may not be available in all markets because product availability is subject to the regulatory and/or medical practices in individual markets. Please contact your Stryker representative if you have questions about the availability of Stryker products in your area. Stryker Corporation or its divisions or other corporate affiliated entities own, use or have applied for the following trademarks or service marks: Stryker. All other trademarks are trademarks of their respective owners or holders.

For more information please contact your local sales representative.

Stryker Australia Pty Ltd
8 Herbert Street
St Leonards NSW 2065
61 2 9467 1000
www.stryker.com.au

Stryker New Zealand Limited
PO Box 17-136
Greenlane, Auckland, New Zealand
64 9 573 1890
www.stryker.com